

**27 HENRY STREET, LAWSON, 2783**

🛏 4 🍷 1.5 🚗 2 📏 770M<sup>2</sup>



agent  
blue







## HOME SWEET HOME

Situated in a picturesque street, boasting a prime location—just a stone's throw to Lawson's cafe precinct, train station and Lawson Public School. For dog owners, there's a popular off-leash park just down the road, and scenic bush trails for the walking enthusiast.



This cherished character cottage welcomes you upon entering, whereby you'll be embraced by its warmth and charm. The layout comprises **four bedrooms, one bathroom, and internal laundry with second toilet**. The heart of the home is its **generous sized living room**, which flows through to an **open plan kitchen with eat-in dining area**. French doors provide delightful views of the established garden, and lead to an **undercover entertaining area**, enhancing the indoor-outdoor connection.



The **attached garage**, with internal access, presents **additional living space** for children to unleash their creativity or for hobbyists to pursue their passions. The home sits on a **rare flat block**, making it ideal for families, or individuals seeking both convenience and accessibility.

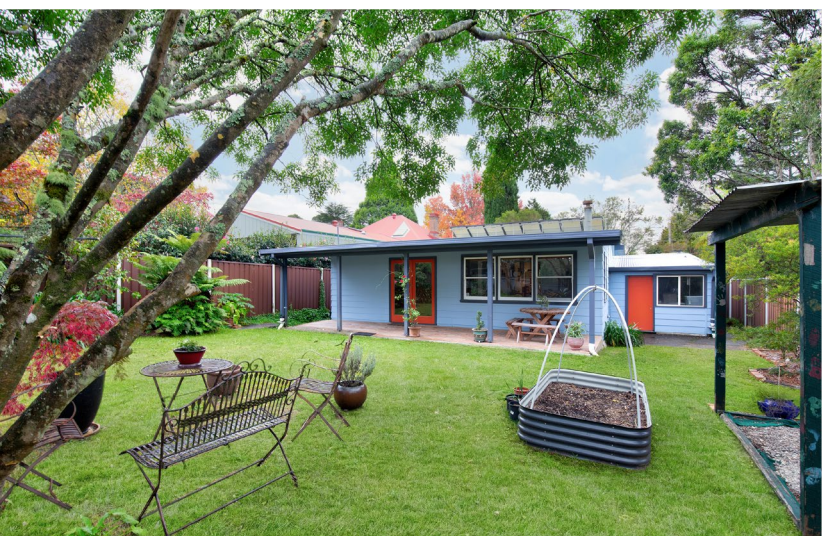


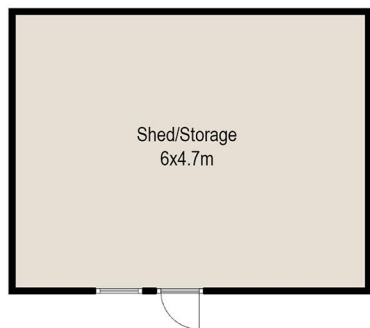
## FEATURES INCLUDE:

- Slow combustion heater
- Flued gas heater
- Gas cooktop
- Hard wood floorboards
- Wooden sash windows
- Insulated roof
- Solar panels
- Garage plus carport
- Second toilet in laundry
- 770sqm (approx.)

**27 HENRY STREET,  
LAWSON, 2783**

🛏 4 🍷 1.5 🚗 2 📏 770M<sup>2</sup>





All measurements are approximate.  
External buildings (shed/storage)  
not shown in actual positions.



**SARAH THOMPSON**

@ sarah@agentblue.com.au

☎ 0451 971 355

🌐 www.agentblue.com.au

✉ PO Box 537, Springwood NSW 2777

